

Embleton Parish Heritage Trails



R.L. Roemans
1904

Explore the history of this
Area of Outstanding Natural Beauty



Countryside Code

Be safe - plan ahead and follow any signs.

Leave gates and property as you find them.

Protect plants and animals, and take your litter home.

Keep dogs under close control.

Consider other people.

Although the walks included are simple, the weather in North Northumberland can be changeable so suitable clothing should be worn.

The text mentions several buildings which are now private homes. Please respect the privacy of the owners of these properties.

All the walks are suitable for taking your dog along but please ensure it is kept under control and on a leash when necessary, especially during lambing time.

The information in this book is included in good faith and is believed to be correct at the time of publication. No responsibility is accepted by the author of the Parish Council for errors or any loss or injury however caused.

Walk No. 3

Embleton – Christon Bank – Falloden – Embleton

This 3.5 mile, 5.5km walk goes across the fields from Embleton and after crossing the railway, reaches Christon Bank Farm before going through the woods to Falloden Hall. After returning to Christon Bank the route crosses more fields to return to Embleton.



- ① Leave the village green next to Dunstanburgh Castle Hotel and walk down Station Road opposite. After passing the Eighteenth century dovecote in the field on the left, the road swings right to meet Merton Cottages. Opposite this junction is a public footpath sign pointing across the field to 'Rock 2 miles'.
- ② Climb through the gap in the wall and cross the field to a gate in the fence (at about 1 o'clock). Go through the gate and walk up to the summit of the hill. In the corner of the field (at about 2 o'clock) is a gate. Walk down to this gate.
- ③ Go through the gate and keeping the fence on your right pass through three more gates to reach the road. Paddy's Mount is ahead to your left. A
- ④ Cross the road, go through the swinging gate, over the stile, turn left and down the steps to the railway line. CARE HERE AS TRAINS PASS AT MORE THAN 100mph. Cross the line, up the steps and over the stile. Keep the hedge on your right and continue to another stile. Over the stile and cross the stream via the bridge. Follow the waymarks through the copse. Continue, keeping the stream on your right, until you reach a second copse. Turn right along the track towards Christon Bank Farm.
- ⑤ On meeting the lane turn left and continue to main road. Turn right and walk about 200m to a lane leading off to the left with a grass triangle in the road. Enter the woodland walk here via the gate and follow the waymarks through the wood. After passing over a log bridge there is a glimpse of Fallodon Hall B on the left. Once you reach the wall of Fallodon Hall garden keep the wall on your left until you meet the drive leading to the Hall. Turn right down the drive to the main road (about 250m). Turn right towards the railway crossing. C
- ⑥ Immediately before the crossing is a gate signposted 'Christon Bank $\frac{1}{2}$ mile'. Go through the gate and keeping the railway on your left carry straight on to Christon Bank.
- ⑦ Cross the railway line and turn right opposite the Blink Bonny pub/restaurant.
- ⑧ Walk along the road until you reach the end of the cottages on your left and you will see a signpost to Embleton.
- ⑨ Follow the path through three gates. Keeping the hedge on your right cross to another gate, pass through this and follow the path with the wood on your right. Continue to the farmhouse, cross the yard and onto the track. After about 300m there is a gate on your right. Go through this and cross the field diagonally to a gate near the road. Turn right to return to the village green.

A Paddy's Mount

This is the burial mound of an Irish Labourer who was killed in a fall at Christon Bank. The mound is surmounted with a small clump of trees and fenced off and a memorial stone still marks his grave. It is said that he was refused burial in the churchyard because of his religion so his friends buried him here and planted trees around the spot.

The former employer of Paddy, who was a farmer, was angry at the vicar for refusing the churchyard burial and was determined to show it. The Vicar of Embleton at this time was extremely well built and was in the habit of taking a weekly walk across Christon Bank Farm land to inspect the outer reaches of his Parish.

The farmer was well aware that he couldn't stop the vicar from using the rights of way but what he did do was to narrow all the stiles on the route such that the Vicar was unable to get through them.

B Fallodon Hall

Fallodon Hall was most famously the birthplace and/or home of the Grey family. The second Earl Grey, famous for his connections with the 1832 Reform Bill and with Catholic Emancipation was born here in 1764.

Sir George Grey (1799 - 1882) was Home Secretary for almost 20 years. His grandson Sir Edward Grey (Grey of Fallodon) was born in 1862 and was Foreign Secretary during the First World War.

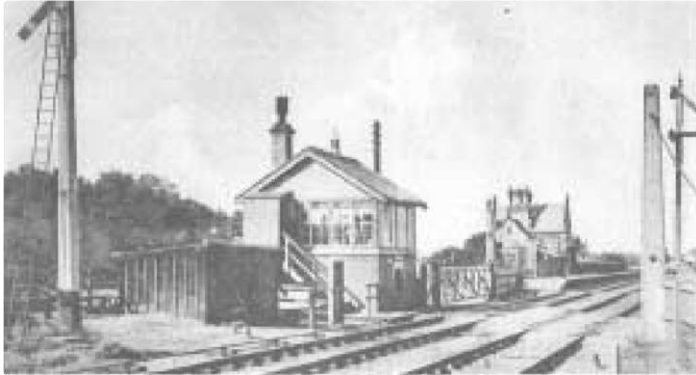


The Hall was sold in 1946 to the Hon. Henry Bridgeman and still remains in the family.

The greater part of the house that stands today was built by Thomas Wood in the early eighteenth century incorporating part of the older 17th century residence. After his death in 1755 Fallodon passed through his daughter to the Grey family of Howick. In 1917 a serious fire gutted the main part of the house, the kitchen wing being the main surviving area.

The house was rebuilt in 1921 - 1924 within the old shell, but without the second floor, under the direction of George Reavell the Alnwick architect.

The old walled garden has walls about 3m in height and basically seem to be those of the famous late 17th century garden.



C *The Halt*

Opposite the public footpath sign to Embleton is a flat gravelled area by the side of the railway. The Grey's were sufficiently important in Victorian Northumberland to have their own private halt (station) close to their house where trains stopped if any of the Grey family were aboard.

Unfortunately, the station has long since disappeared but the site remains as a reminder of what used to be. There was also an L.N.E.R. steam locomotive called Fallodon.